

Fauquier County Conservation Easements Update:

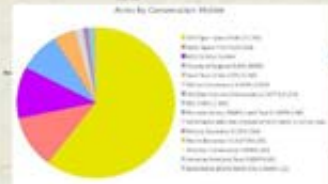
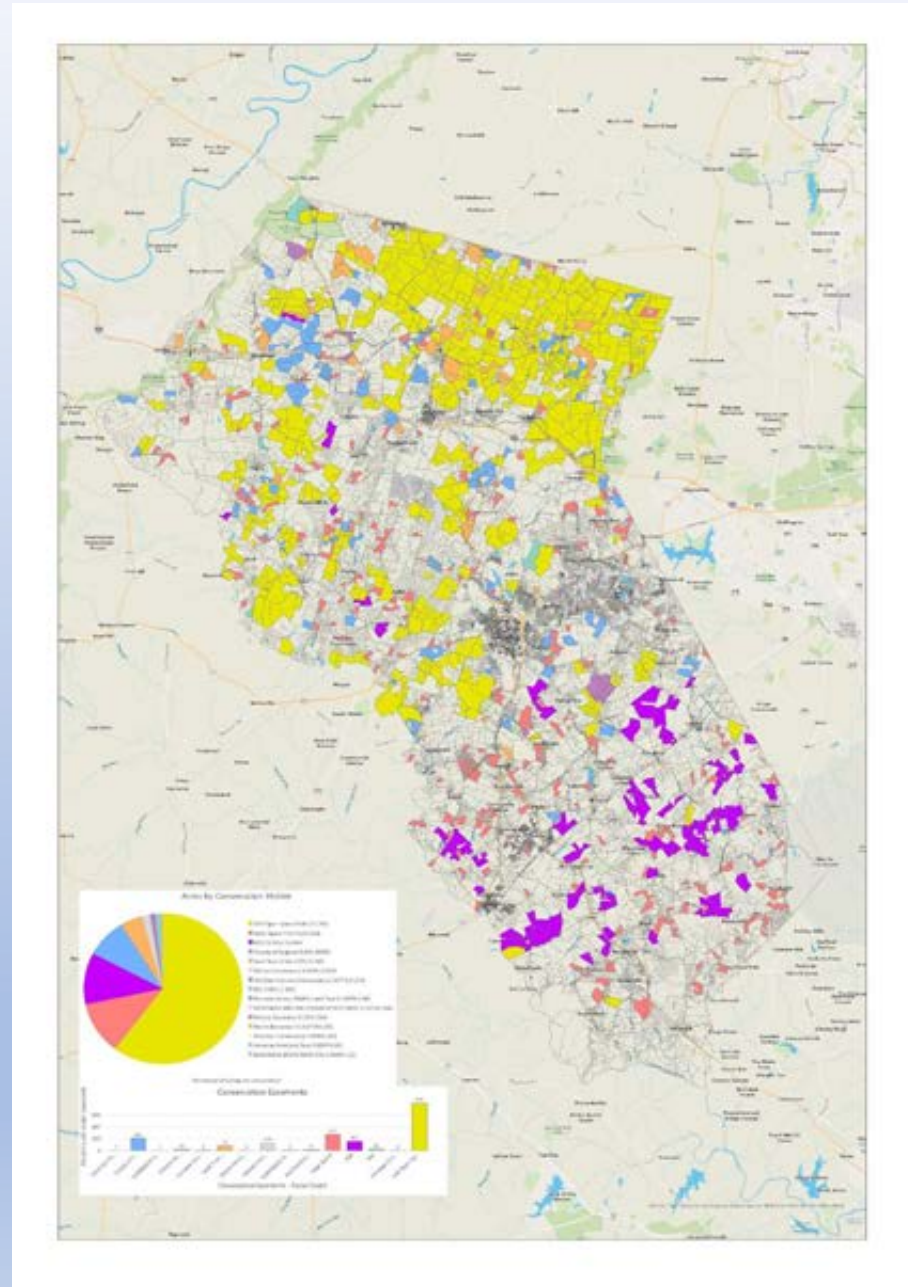
- Purchase of Development Rights (PDR).
- Donated Conservation Easements (CE).

Jim Hilleary
Department of Agricultural Development
Jim.Hilleary@fauquiercounty.gov / 540
422-8278



Total Conservation Easements

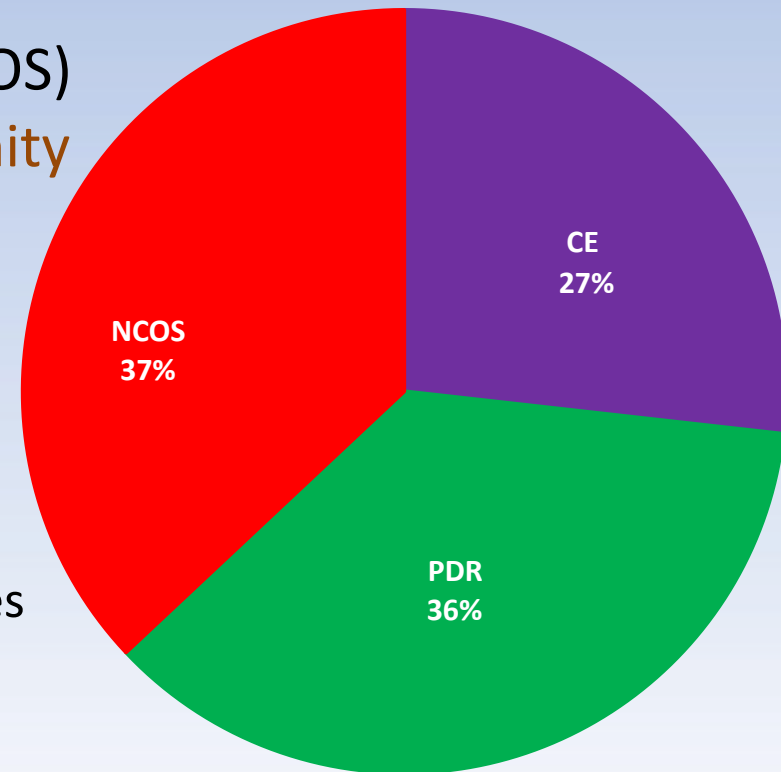
- 417,120 acres (651.75 square miles) in Fauquier County.
- 119,000 acres (29% of total Fauquier County acreage) is in permanent easement held by various entities.
- 36,404 acres (31% of permanent easement acreage) is held by Fauquier County.



Three Types of Easements Held by Fauquier County

1. 9,952 acres Donated Conservation Easements (CE).
2. 13,088 acres Purchase of Development Rights (PDR) Easements.
3. 13,364 Non-common Open Space (COS) Easements administered by Community Development.

36,404 total Fauquier County easement acres



Recent Changes in PDR/CE Administration

June 2024, Board of Supervisors approve including Department of Agricultural Development (AgDev) in the Fauquier Government's processing of County owned conservation easements:

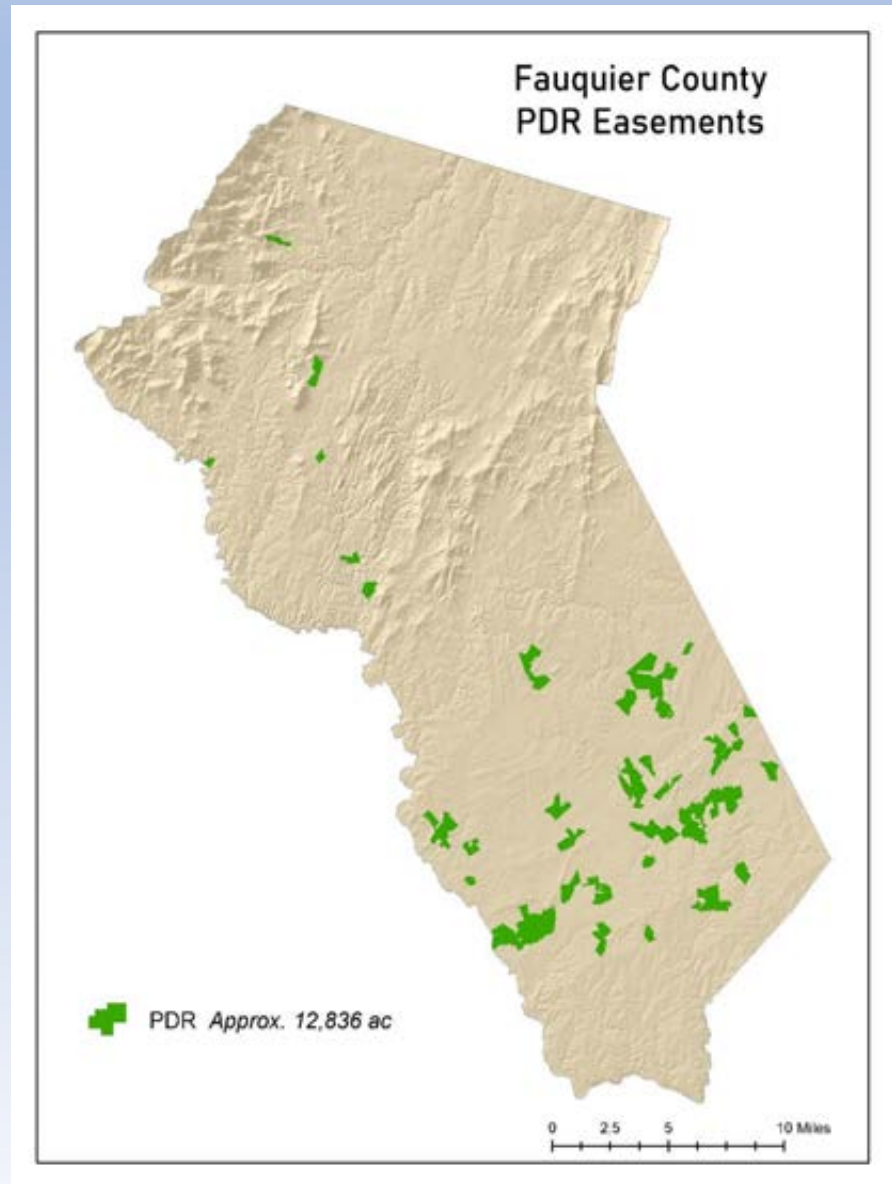
- Purchase of Development Rights (PDR).
- Donated Conservation Easements (CE).

Our role:

- Be the first county department or office to interact with property owners.
- Implement the subsequent monitoring visits.
- Coordinate with other conservation easement organizations.

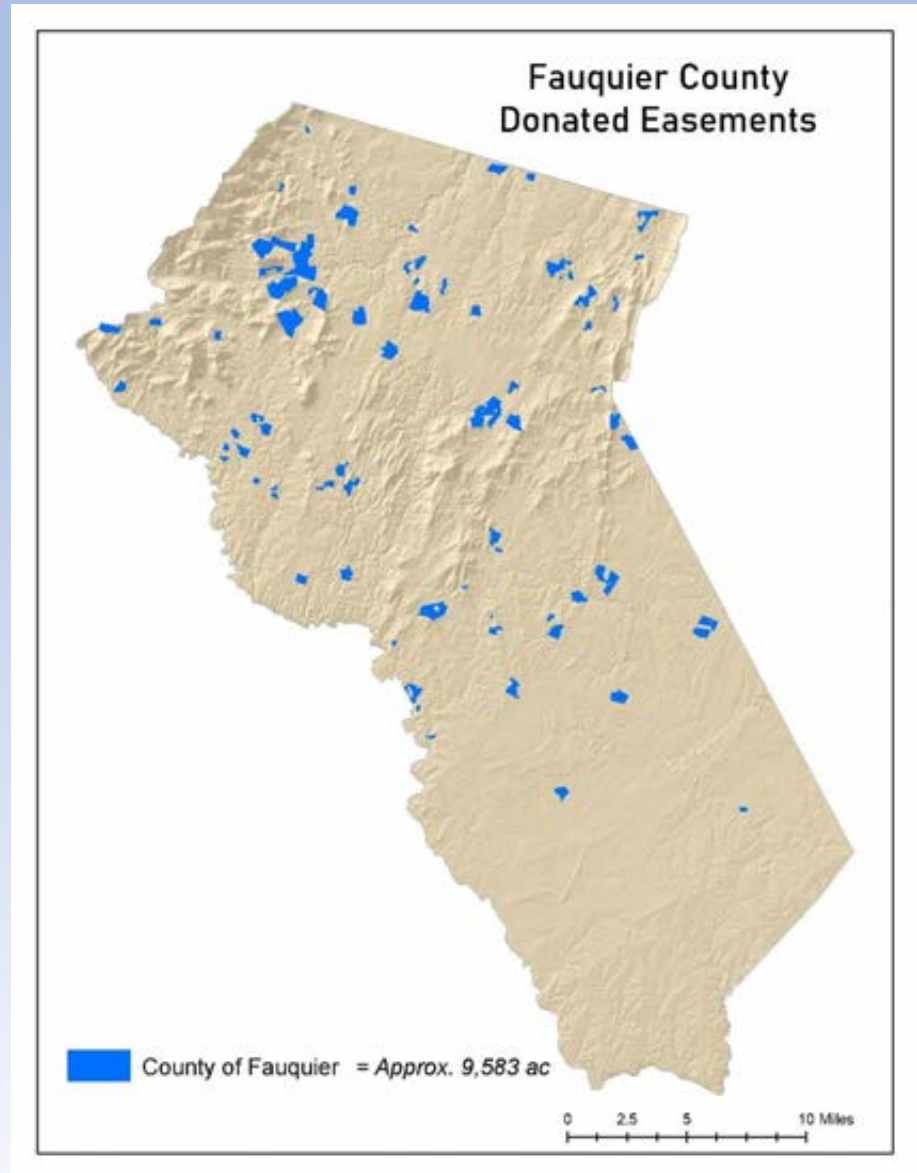
Purchase of Development Rights (PDR) Programs

13,088 acres.



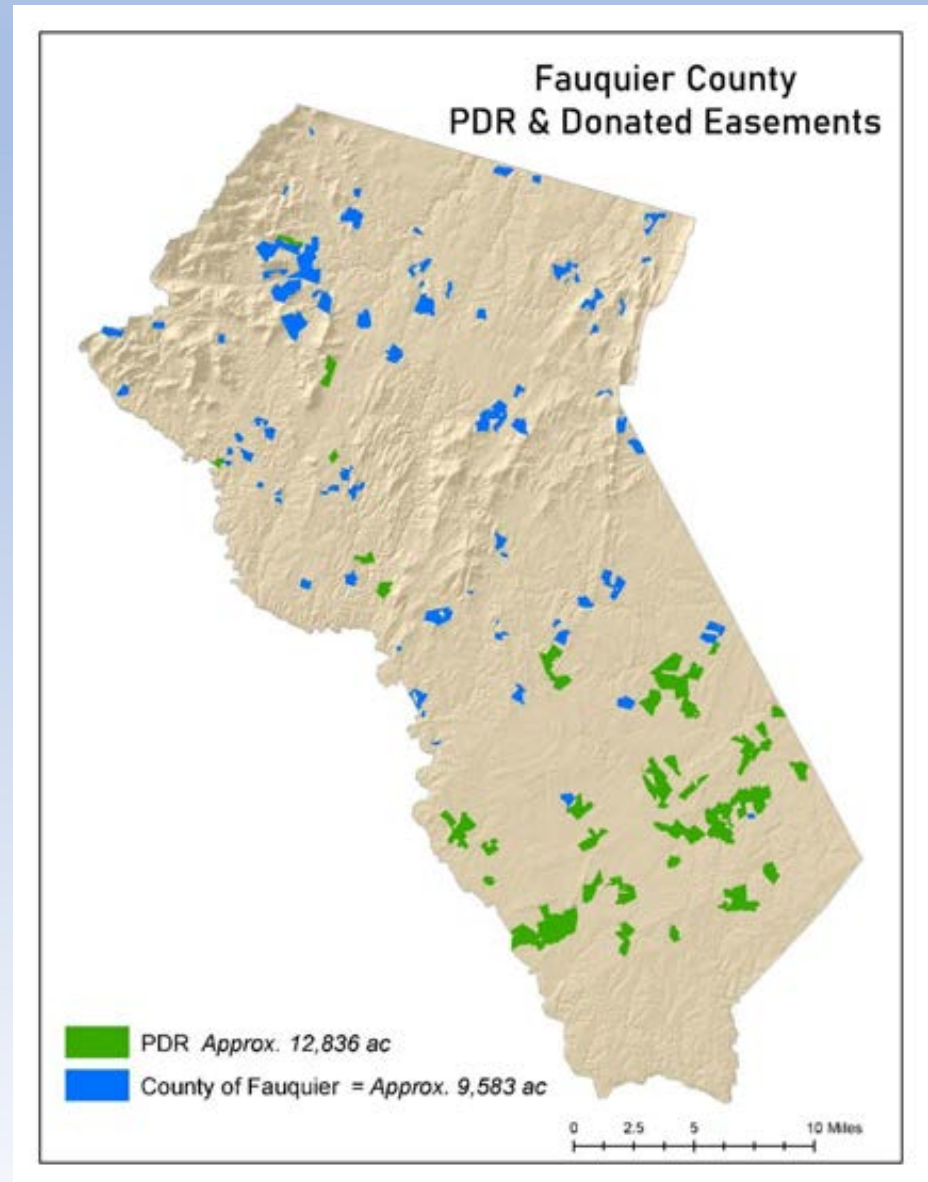
Donated Conservation Easements (CE) Program

9,952 acres.



PDR and CE Programs

23,040 acres.



Questions?

Jim Hilleary
Department of Agricultural Development
Jim.Hilleary@fauquiercounty.gov / 540
422-8278

