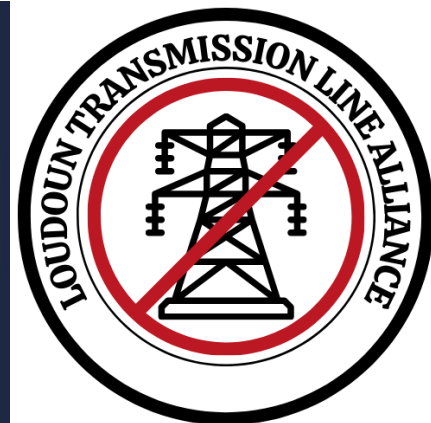




Loudoun Transmission Line Alliance The MARL Line



Discussion Points

- The MARL Line in Western Loudoun and the LTLA
- Examples of impacts of the MARL Transmission Line path through rural Loudoun
 - Impact on vineyards, breweries, and B&B's
 - Impact on farming and prime soils
- Mapping Loudoun's heritage resources
- LTLA conclusions and next steps





Waterford Ridge Line



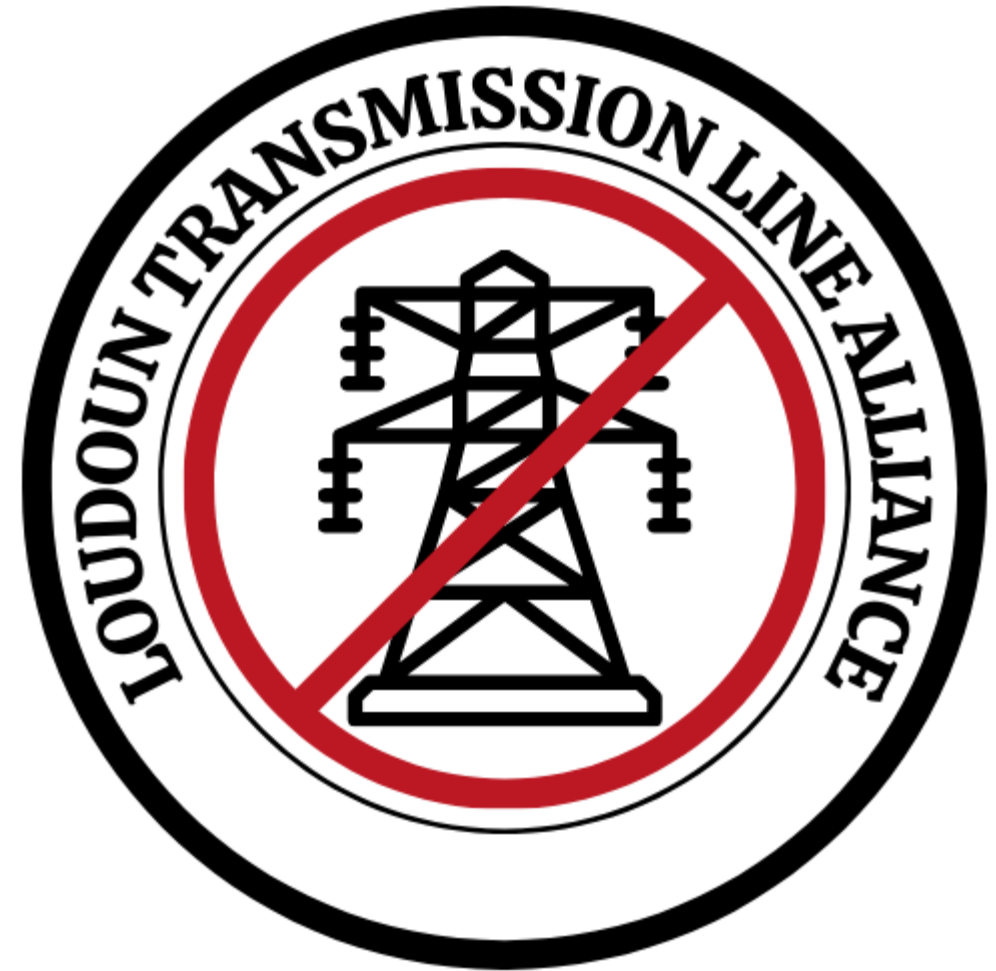
Waterford Ridge Line with Towers

The Proposed MARL Line

- NextEra Energy refers to the project as the “MidAtlantic Resiliency Link” **MARL**
- 2022 Regional Transmission Expansion Plan aims to respond to new data center demand of up to **7,500 mW**
 - One mW equals 800 homes of electricity needs; the current demand is the equivalent of **6,000,000 homes**
- The proposed line will run from the **SW corner of Penn through WV, Maryland, and Virginia**, including 25 miles cutting diagonally across western Loudoun County to what will be the new Aspen substation east of Leesburg

Formation of the LTLA

- Close to 50 organizations
- Studying the impact the proposed MARL line would have on businesses, the environment, heritage sites, and residents
- Looking for creative solutions to reduce impact



Loudoun Transmission Line Alliance

Aldie Heritage Association	Loudoun Therapeutic Riding
Between the Hills Conservancy	LTLA Lovettsville Community Chapter
Bluemont Citizens Association	Loudoun Wildlife Conservancy
Catoctin Creek Scenic River Committee	Loudoun Wineries & Wine Growers Assoc.
Data Center Work Group, LCPCC	Nautical Bowls Leesburg
Destination Stewardship Center	Northern Virginia Conservation Trust
Etten's Eden- Nursery, Cut Flower Farm	Old Dominion Land Conservancy
Equine Spirit LLC DBA Ardent Equestrian	Old Wheatland Estates HOA
Friends of the Blue Ridge Mountains	Rockland Farm LLC
Goose Creek Association	Rosemont Farm at Trevor Hill HOA
Hamilton Station Road Coalition	Save Rural Loudoun and its Foundation
Hillsboro Preservation Foundation	Scenic Loudoun Legal Defense
Laurel Hill Farms	Terra Nebulo Winery
Leesburg Garden Club	Unison Preservation Society
Loudoun Bed & Breakfast Guild	Velo Pigs Cycling Club
Loudoun County Brewers Association	Virginia Piedmont Heritage Area Assoc.
Loudoun County Heritage Commission	Waterford Citizens' Association
Loudoun Equine Alliance	Waterford Foundation Inc.
Loudoun's Future PAC	Watermark Woods- Native Plants
Loudoun Historic Village Alliance	Windswept Farm
Loudoun Preservation Society	Wyant Farm Associates

Common Goal for Eastern and Western Loudoun

Solving the complex problem of getting power to those who need it while minimizing the impact of these projects

Bill Hatch

Past President and Board Member, Loudoun
Wineries & Winegrowers Association

Zephaniah Farm Vineyard

Scenic Loudoun Legal Defense

Impacts on Vineyards, Agrotourism Businesses



Zephaniah Farm Vineyard

The Hatch Family Farm

Mill Road Farm



75 Years Farming





**Commodity Farming In
Loudoun Is Not Sustainable
and Will Not Hold a
Farm Together.**







Zephaniah

Rosé
2022

ROUTE
11
POTATO
CHIPS

Cooler Potato Chips

**Viabile Farming
is the Best
Conservation Tool
We Have.**

Positive Economic Impact From 1.2 Million Agrotourism Guests

\$4+ Billion

Loudoun

Tourism

\$288 Million

Agrotourism



WINERY

WILLOWCROFT
Original Winery

AY166VA

WILLOWCROFT



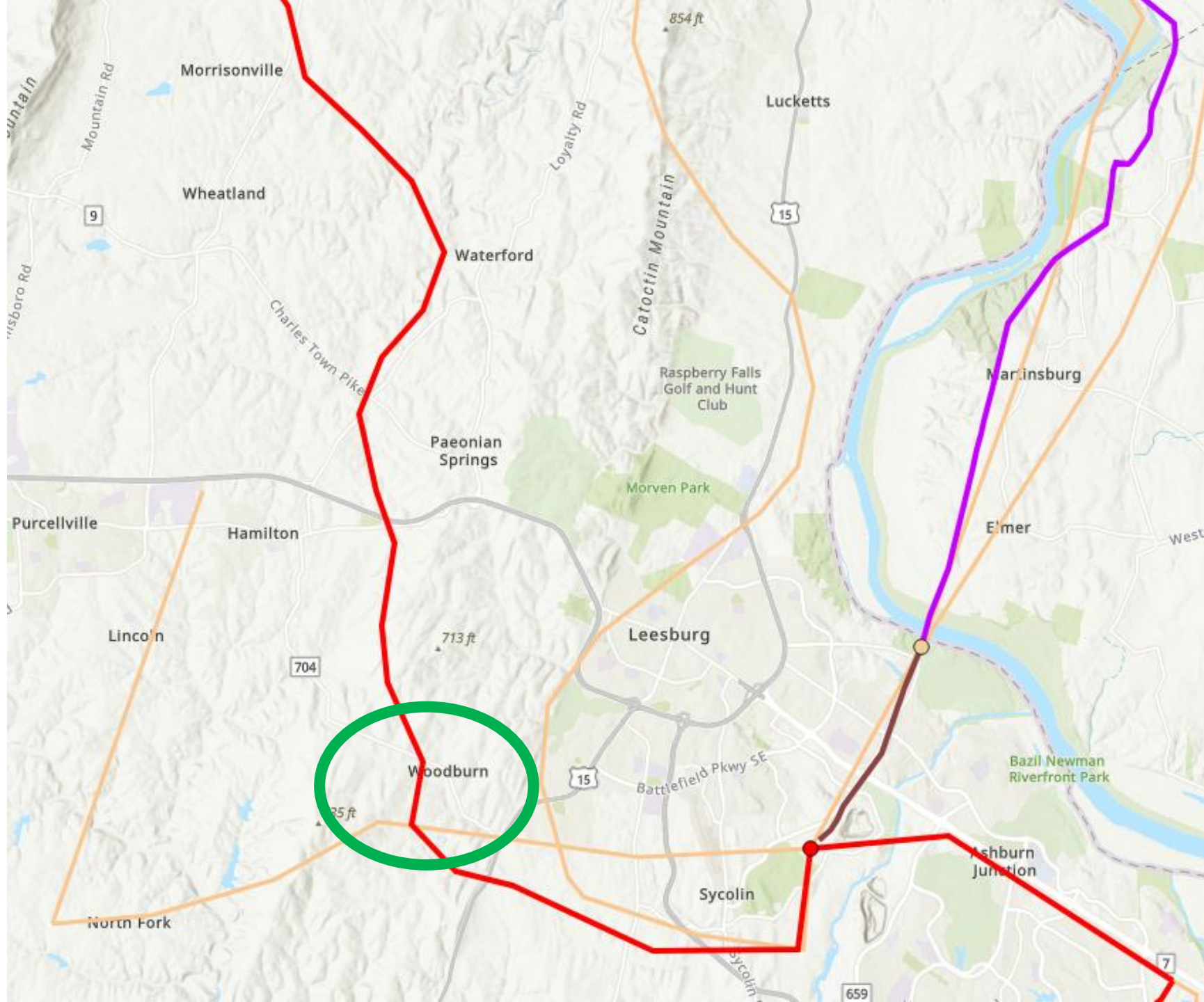
LOUDOUN

Virginia



CELEBRATING 40 YEARS OF LOUDOUN WINE





IMPACT!



Use Advanced Conductors

—

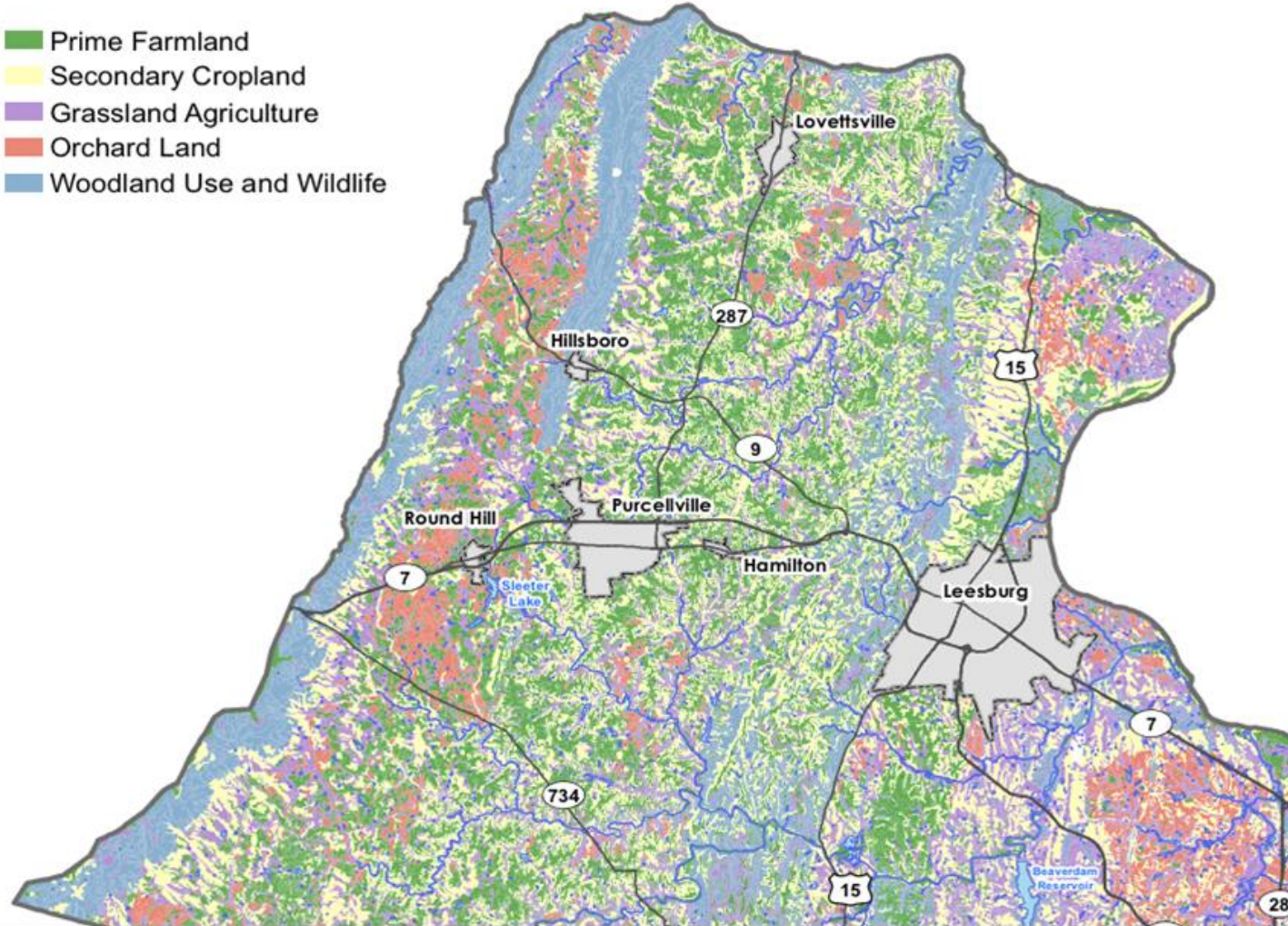
John Adams
Chair of the Agricultural Work
Group of the LCPCC

Impacts on Agriculture and Loudoun Farmers

Loudoun County
**Prime
Agricultural Soils**
2019 General Plan



- Prime Farmland
- Secondary Cropland
- Grassland Agriculture
- Orchard Land
- Woodland Use and Wildlife



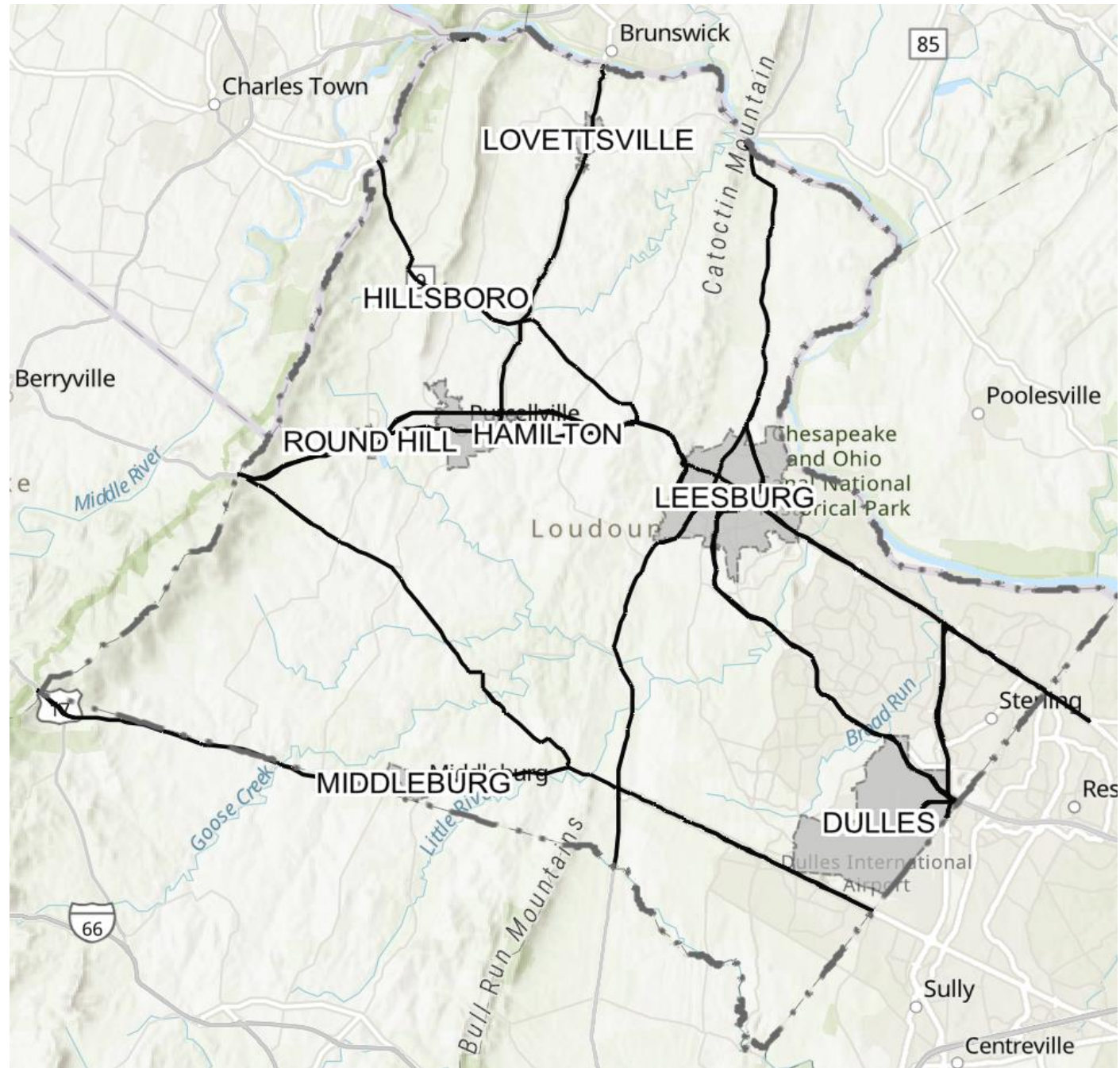
Agriculture in Loudoun County Today

- Virginia's most diverse group of farmers
 - Especially prominent: women, veterans, Hispanic, and Asian producers
 - The number of farms grew by 6% to 1,332 – many with young farmers
- Virginia's leader in agricultural development & product diversity
 - Traditional crops and livestock production
 - Smaller farms specializing in organic fruits and vegetables, cut flowers, berry production, honey, Christmas trees, wine grapes, alpaca, llama, and goat farms

Robert A. Pollard
Chair, Loudoun County Heritage
Commission

Mapping Loudoun's Heritage Resources

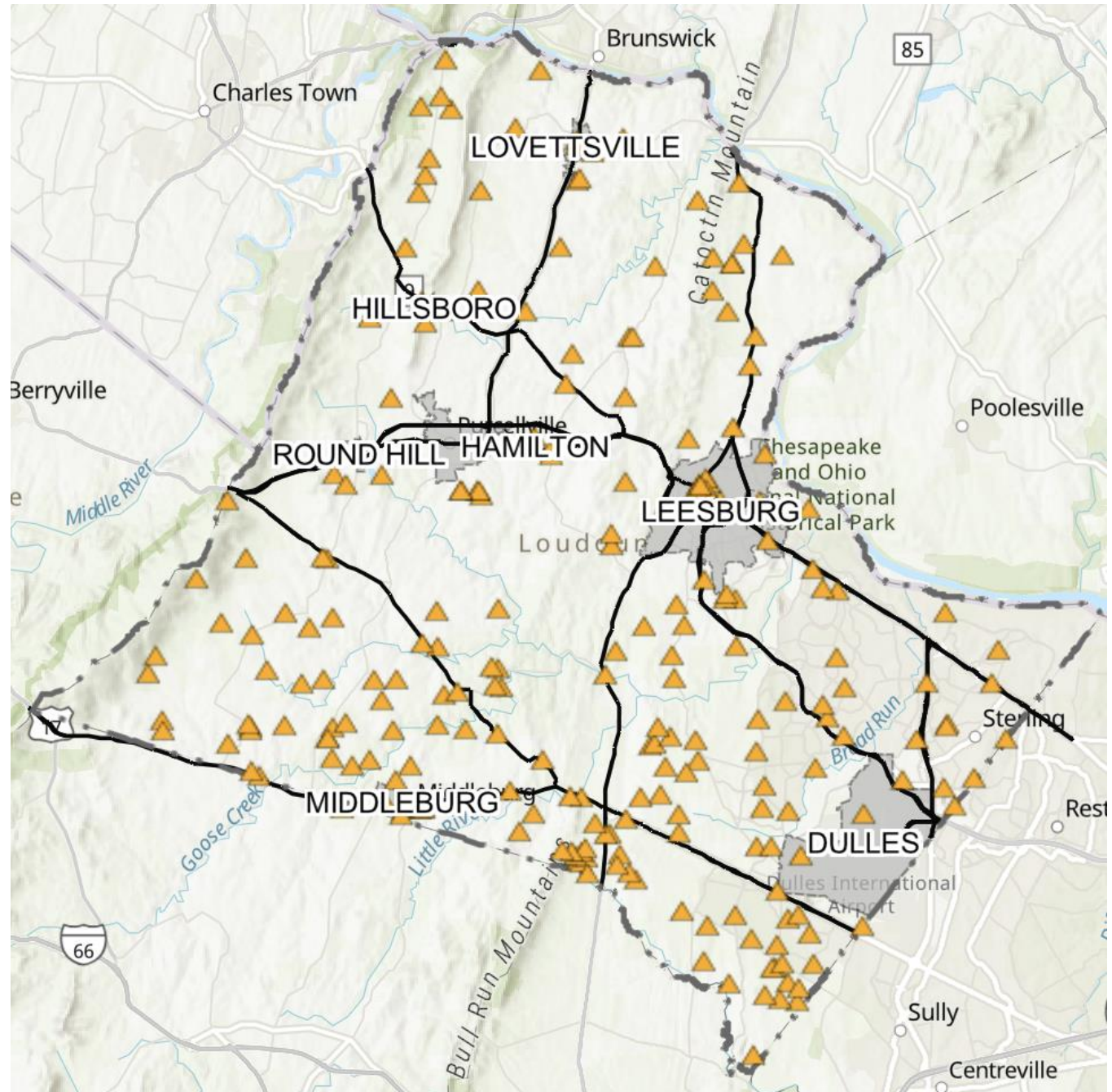
Mapping Loudoun's Heritage Ecosystem



2. Cemeteries



200+ known private and public cemeteries dating from 1700s, with gravesites numbering in single digits to the thousands.

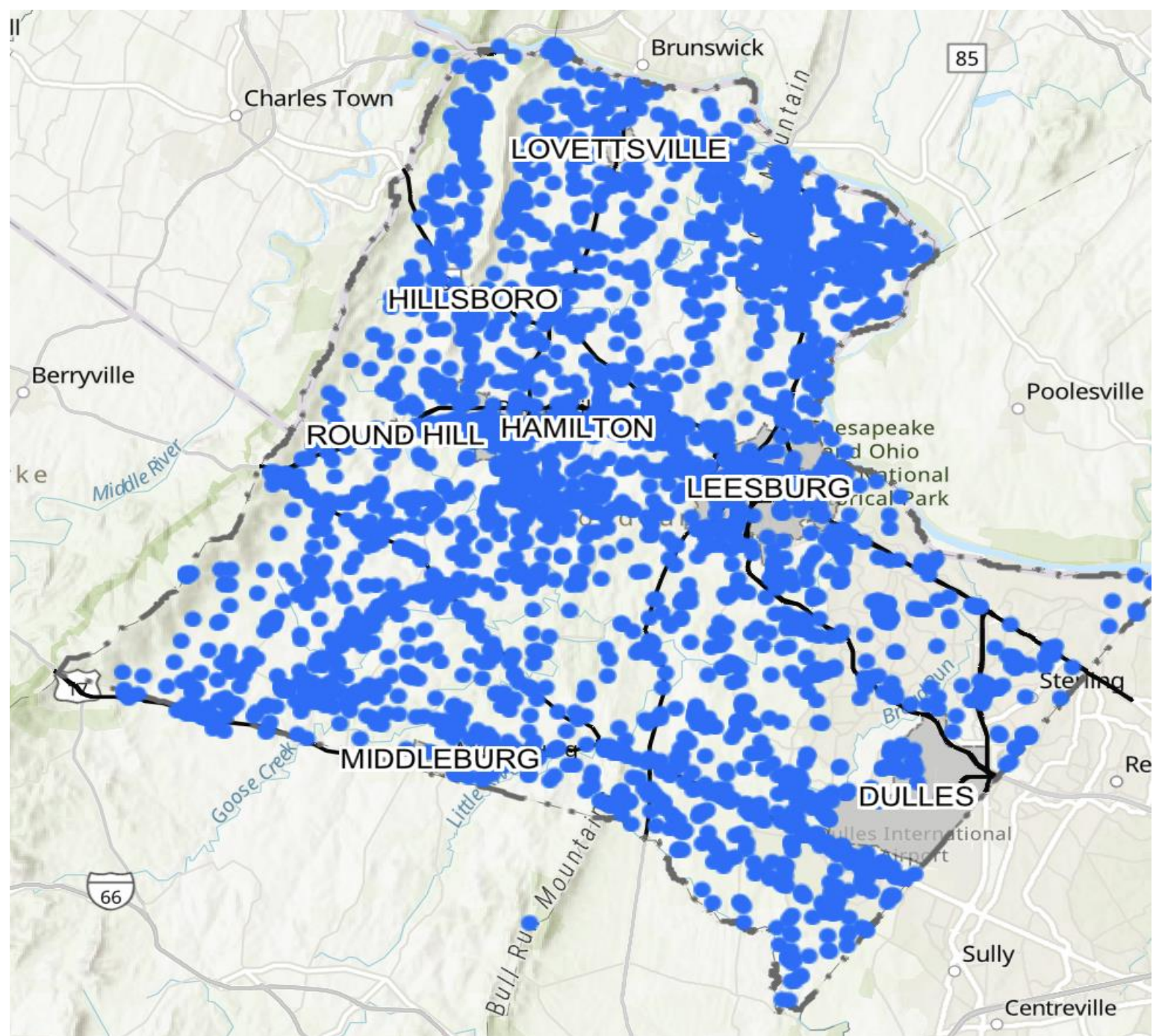


3. Architecture Points

Surveyed historical sites, including those on National and Virginia Registers, as recorded by Virginia Department of Historic Resources.



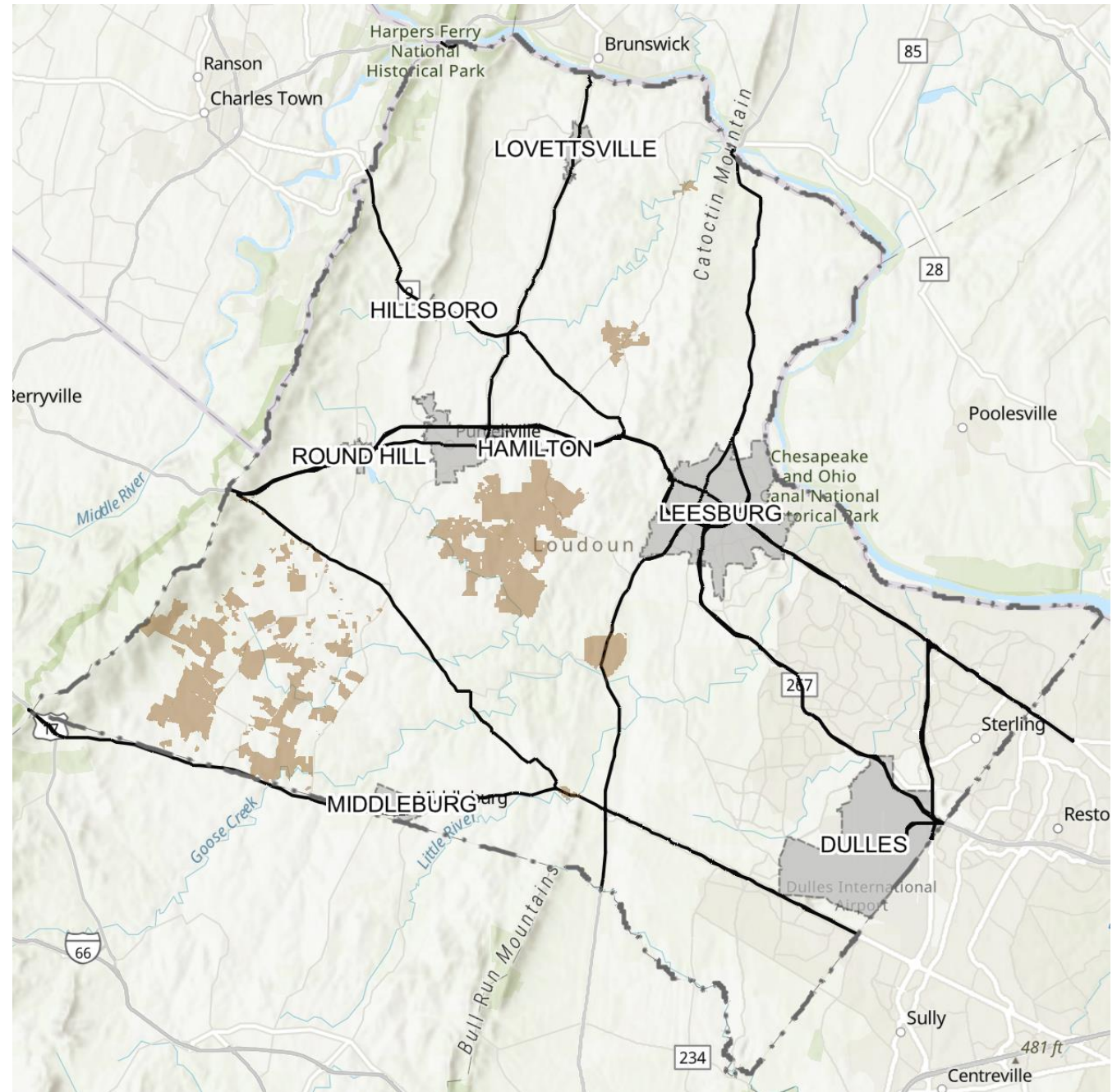
Oatlands Plantation



4. Loudoun County Historic Districts

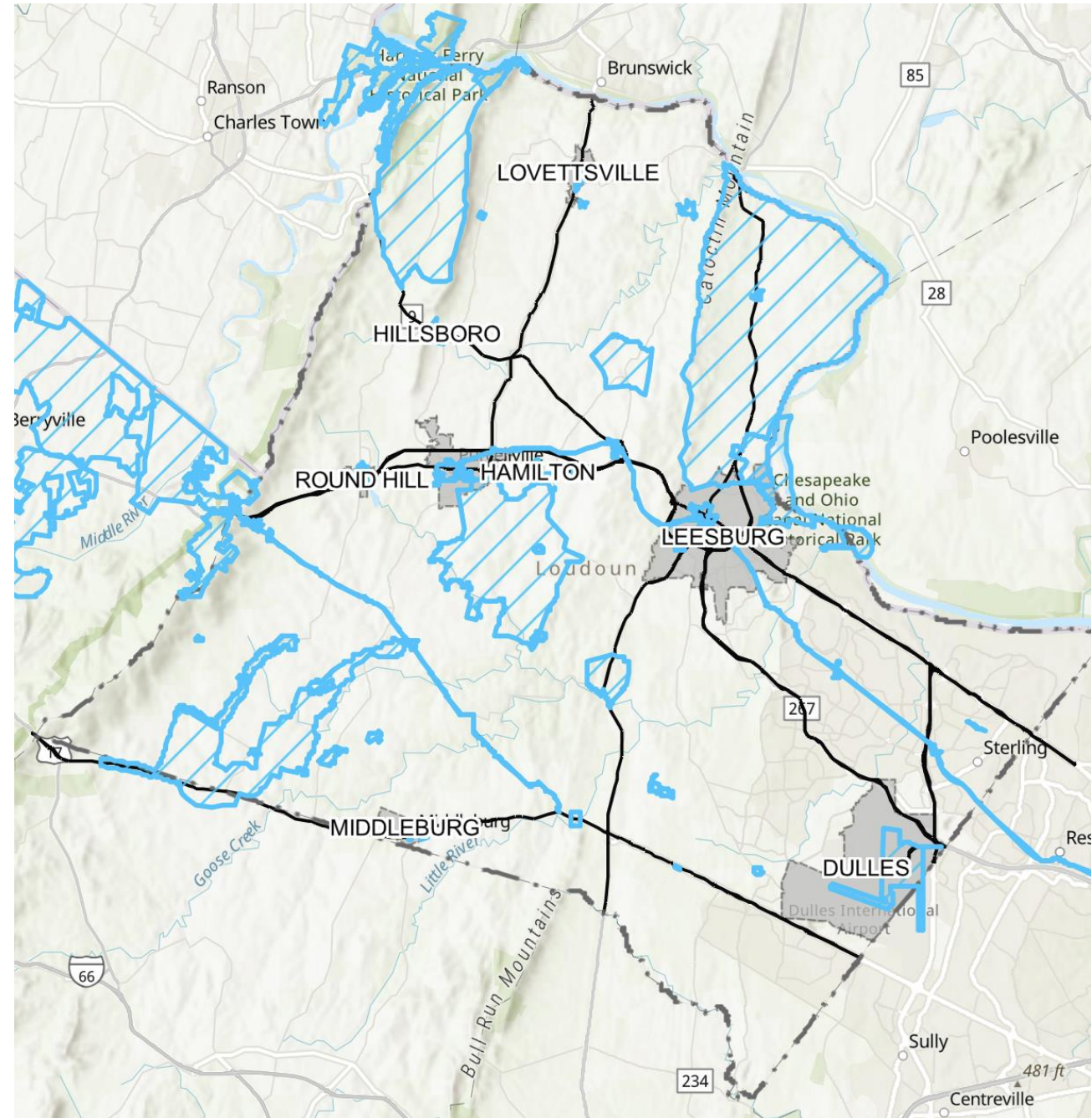


- Aldie
- Beaverdam Creek
- Bluemont
- Goose Creek
- Oatlands
- Taylorstown
- Waterford



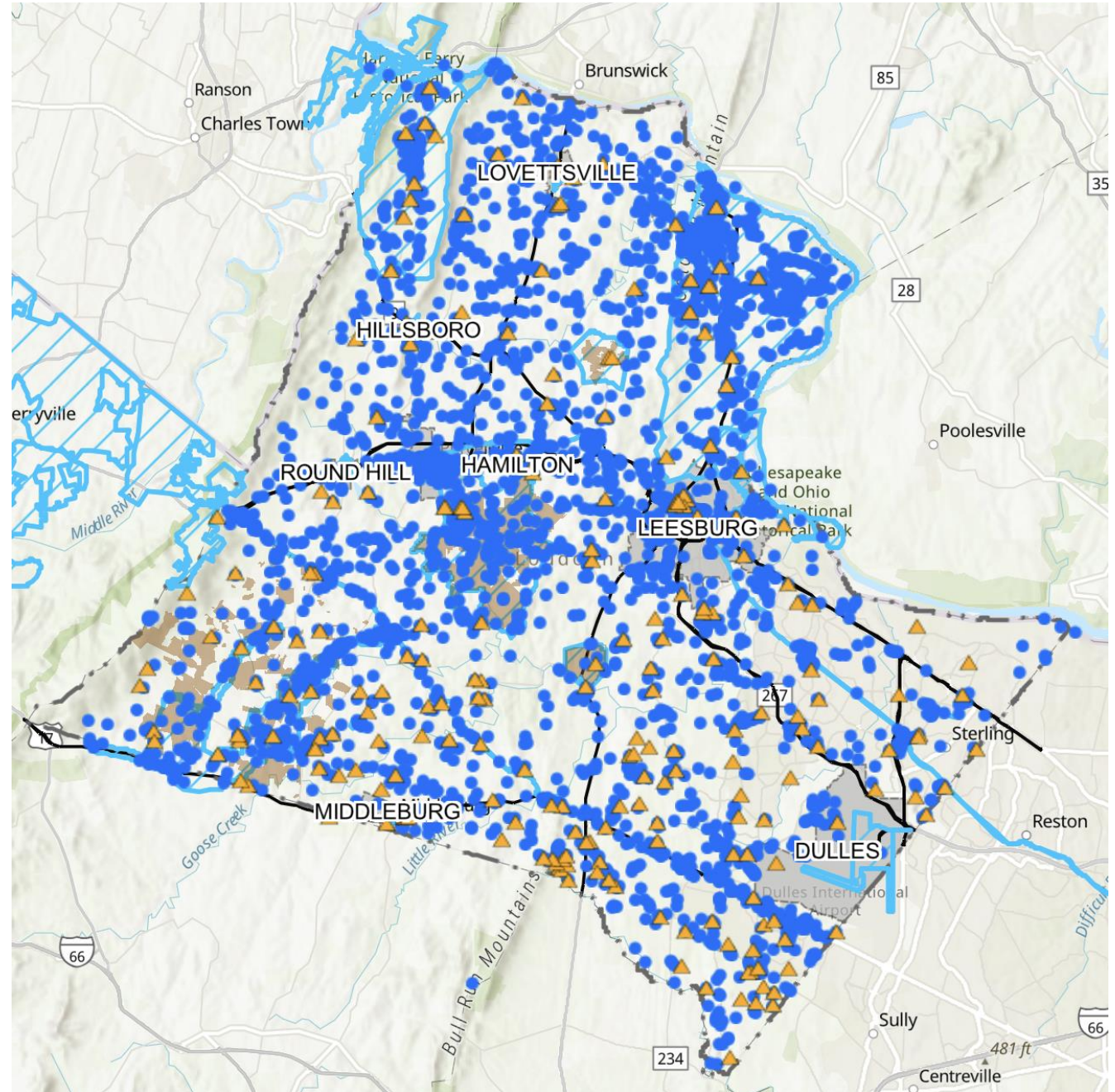
5. Historic Districts (National & Virginia Registers)

Aldie, Ashburn, Ball's Bluff Battlefield, Bear's Den, Between the Hills, Bluemont, Catoctin Rural Historic District, Goose Creek, Oatlands, Paenonian Springs, Taylorstown, Unison, Waterford, and more.



6. Heritage Resource Overlay

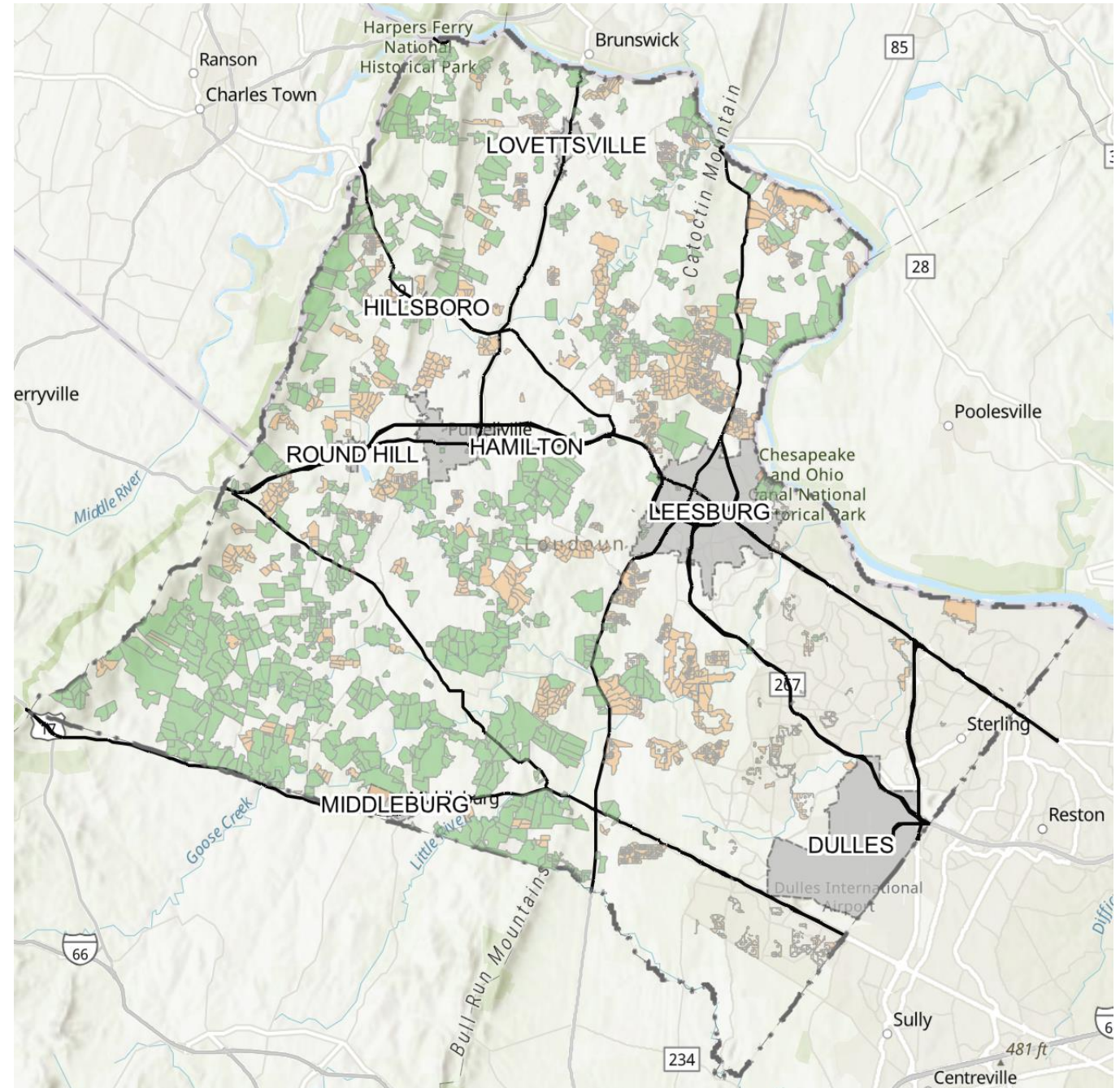
- A dense mosaic of Loudoun County's Historic Resources
- Hundreds of historic buildings, farmsteads, churches, cemeteries, schools, African-American sites
- Intact 18^e and 19^e villages
- Farmland in continuous cultivation for 250 years
- Proud to be a Loudouner!



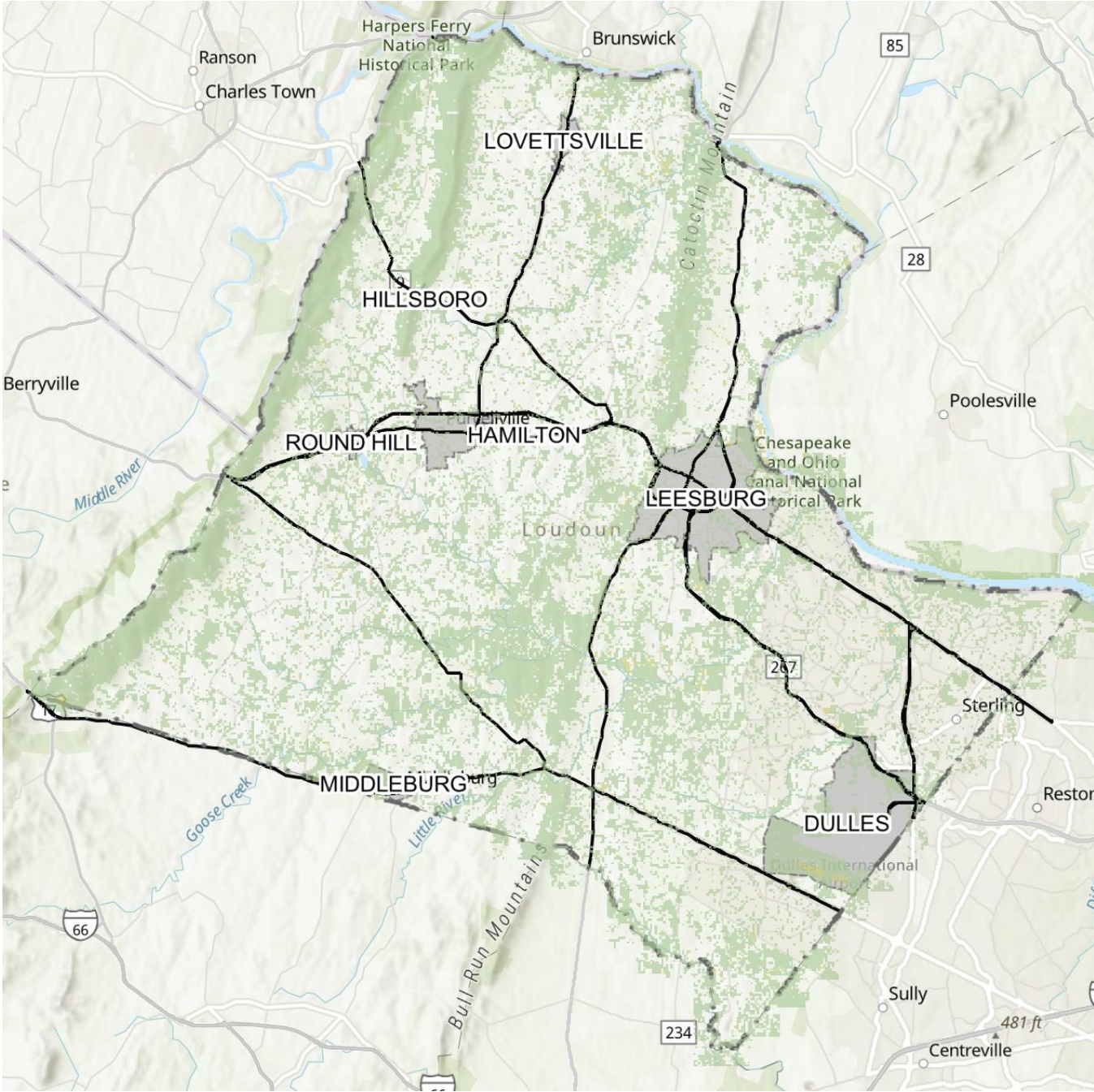
7. Conservation Easements



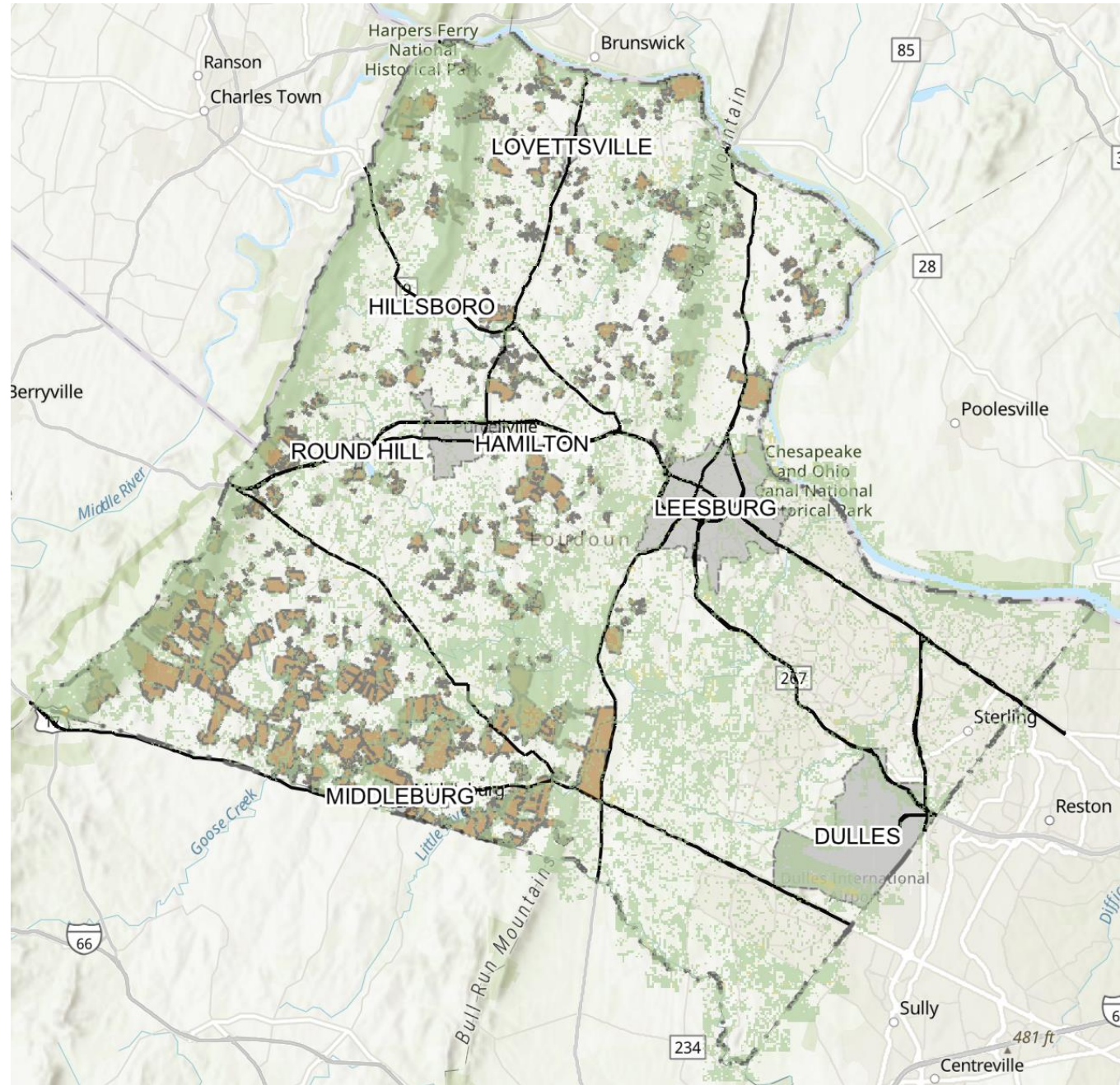
- A precious legacy for future generations!
- Loudoun's 4,426 easements safeguard important environmental and historic sites.
- Critical to Loudoun's heritage ecosystem.



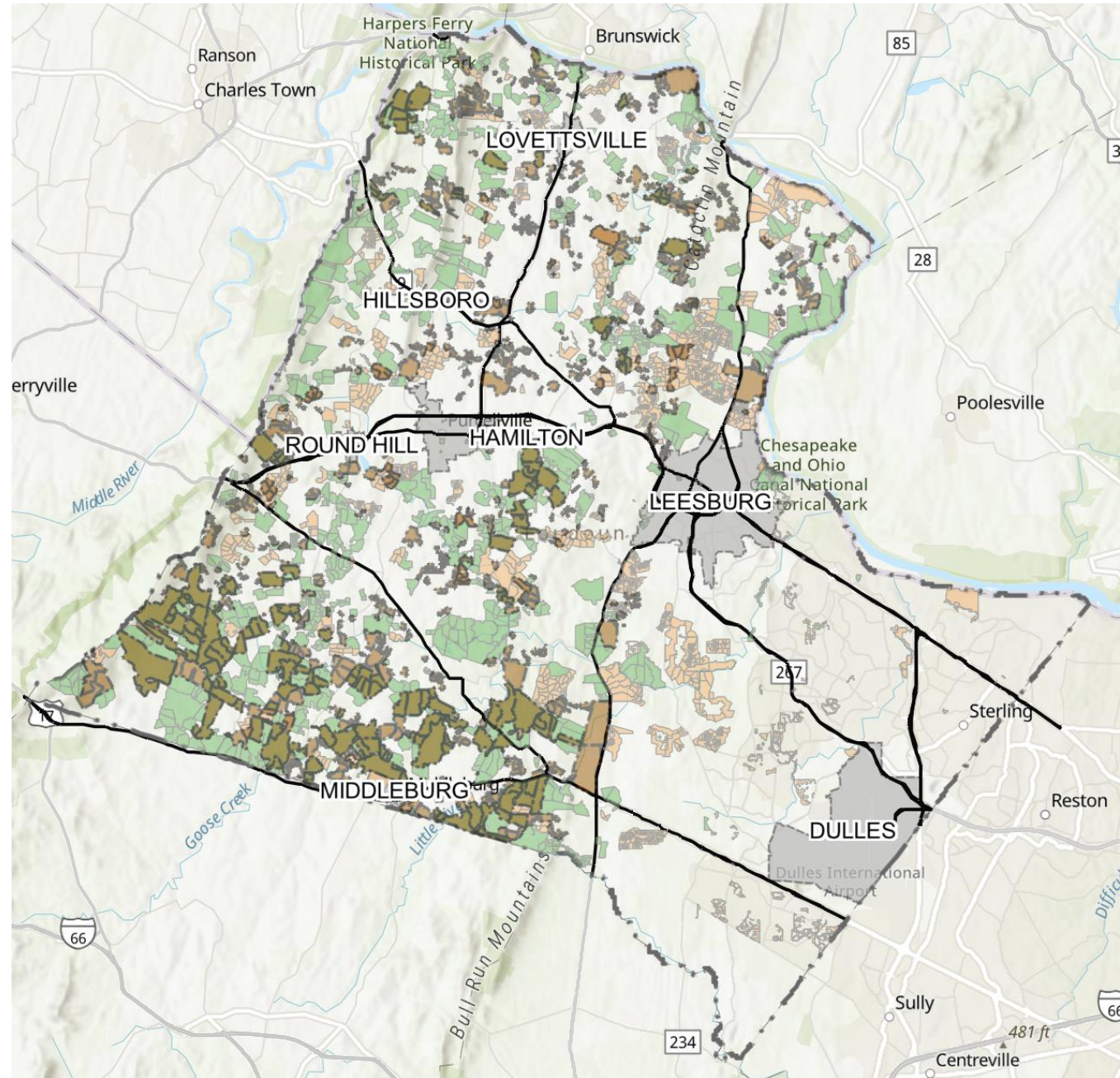
8. Natural & Environmental Resources: Forest



9. Agricultural & Forestal Districts + Forest Overlay



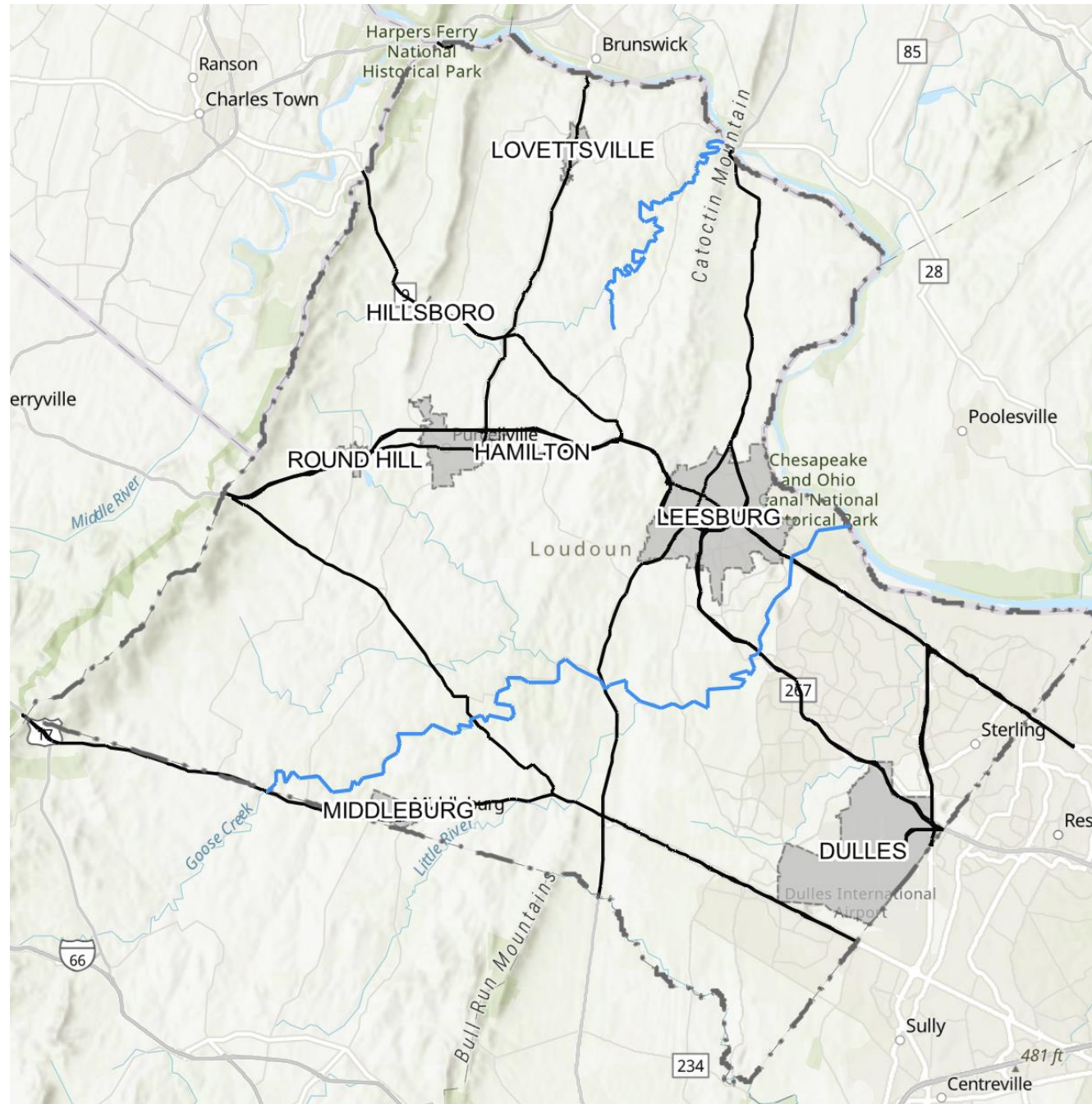
10. Conservation Easements + Agricultural & Forestal Districts



11. Scenic Rivers



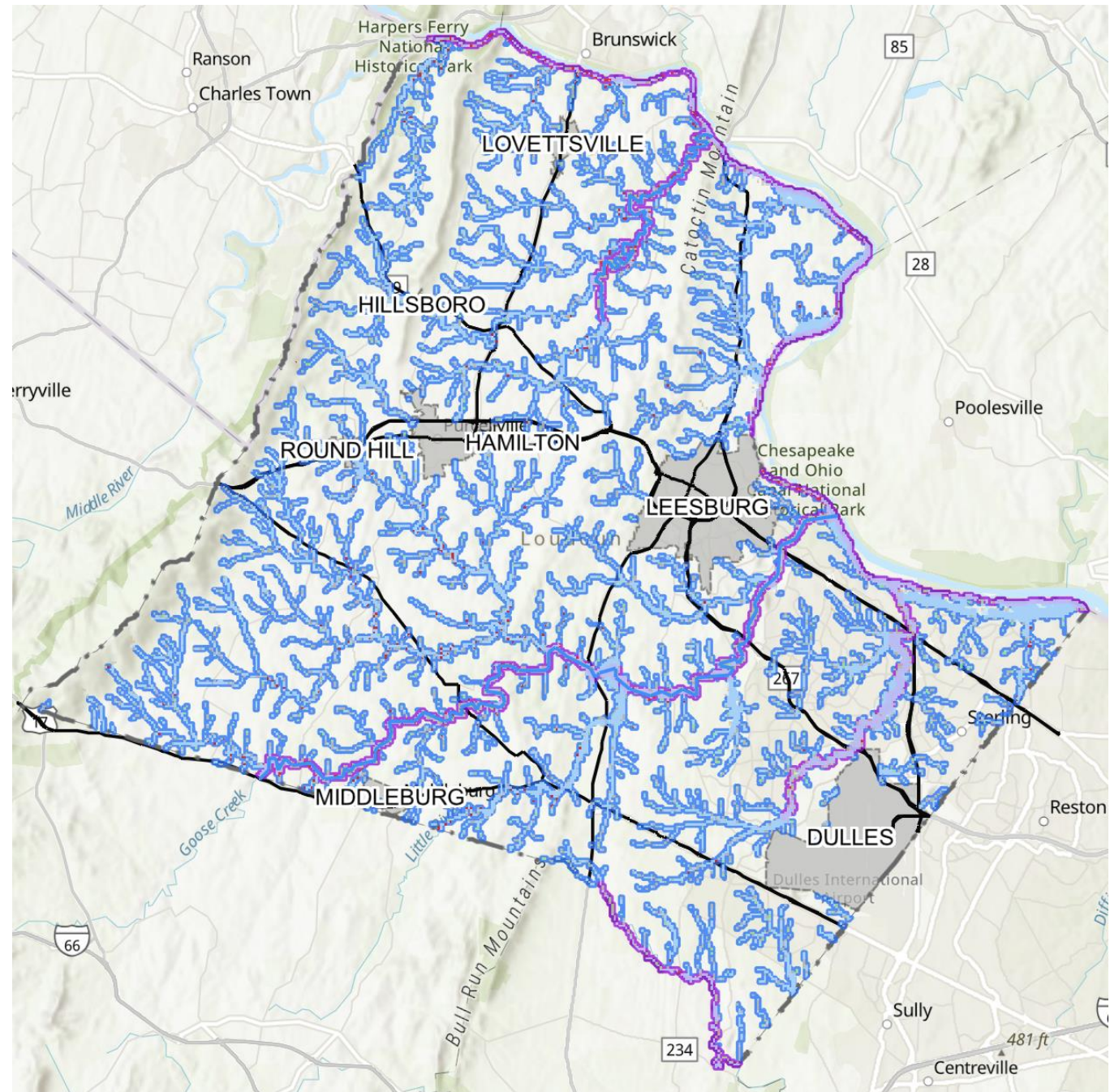
Potomac River



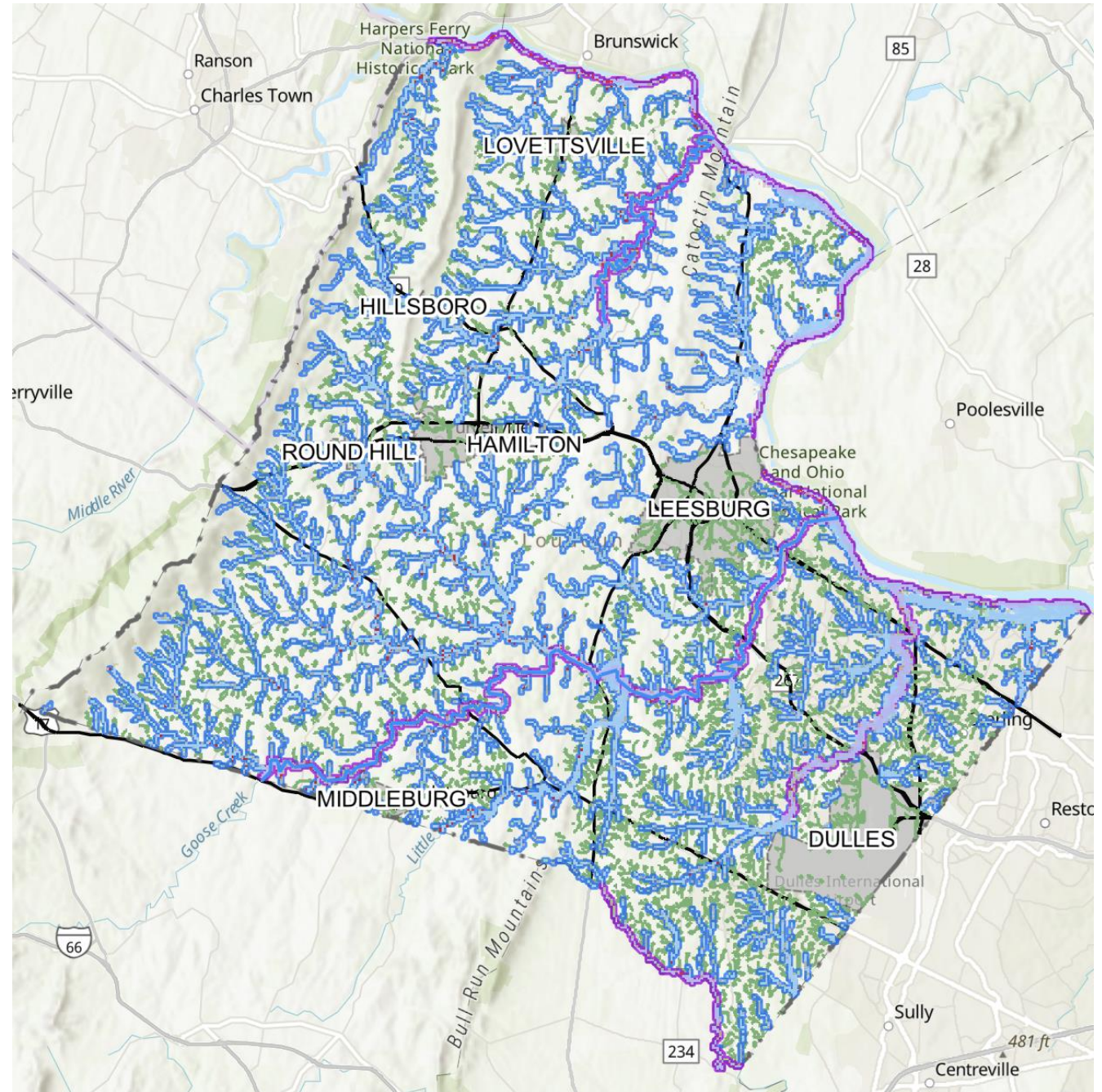
12. Scenic Rivers + River & Stream Corridor



Catoctin Creek



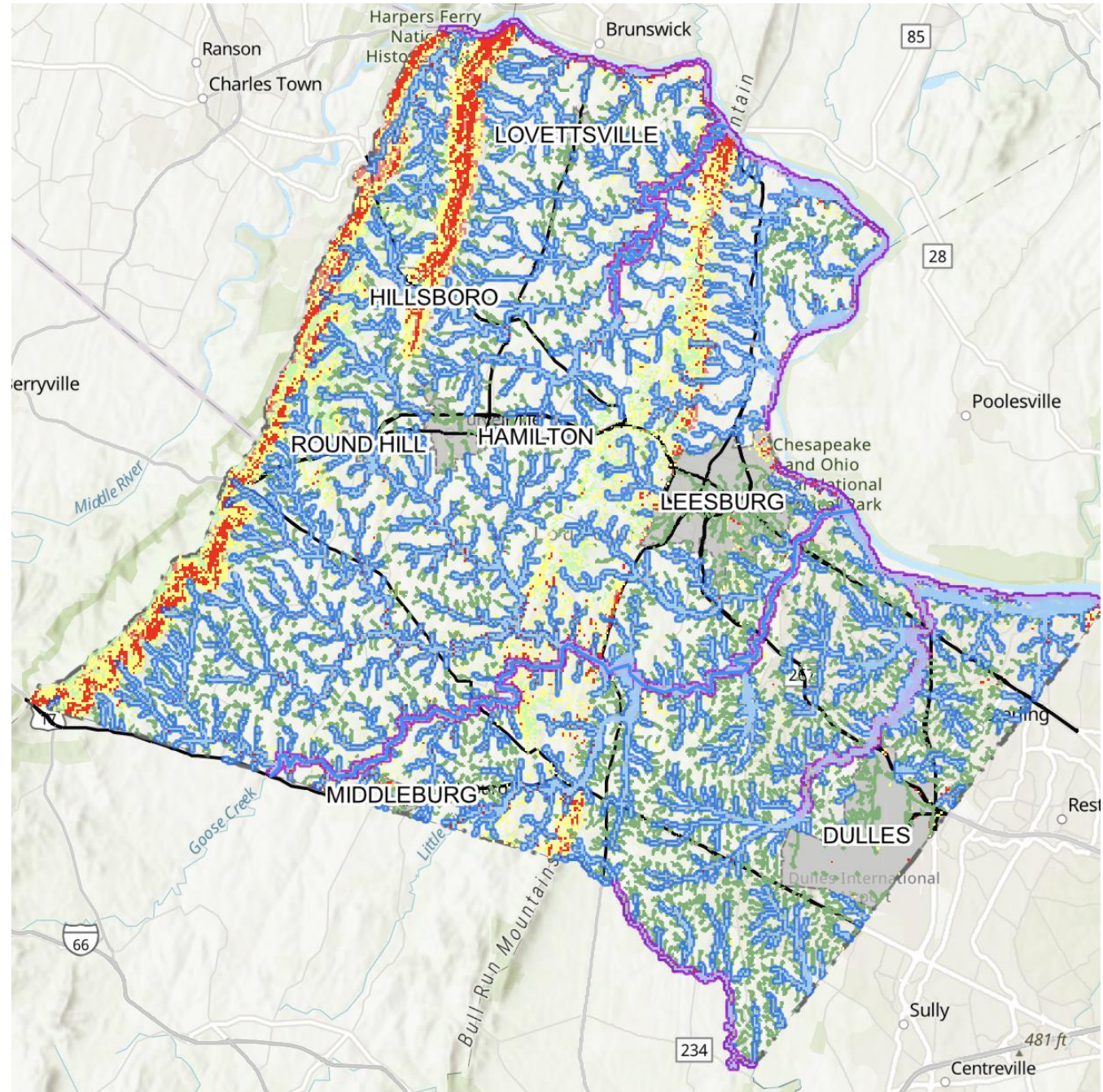
13. Scenic Rivers + River & Stream + Wetlands



14. Scenic Rivers +
River & Stream Corridors +
Wetlands +
Steep slopes +
Mountainside OD



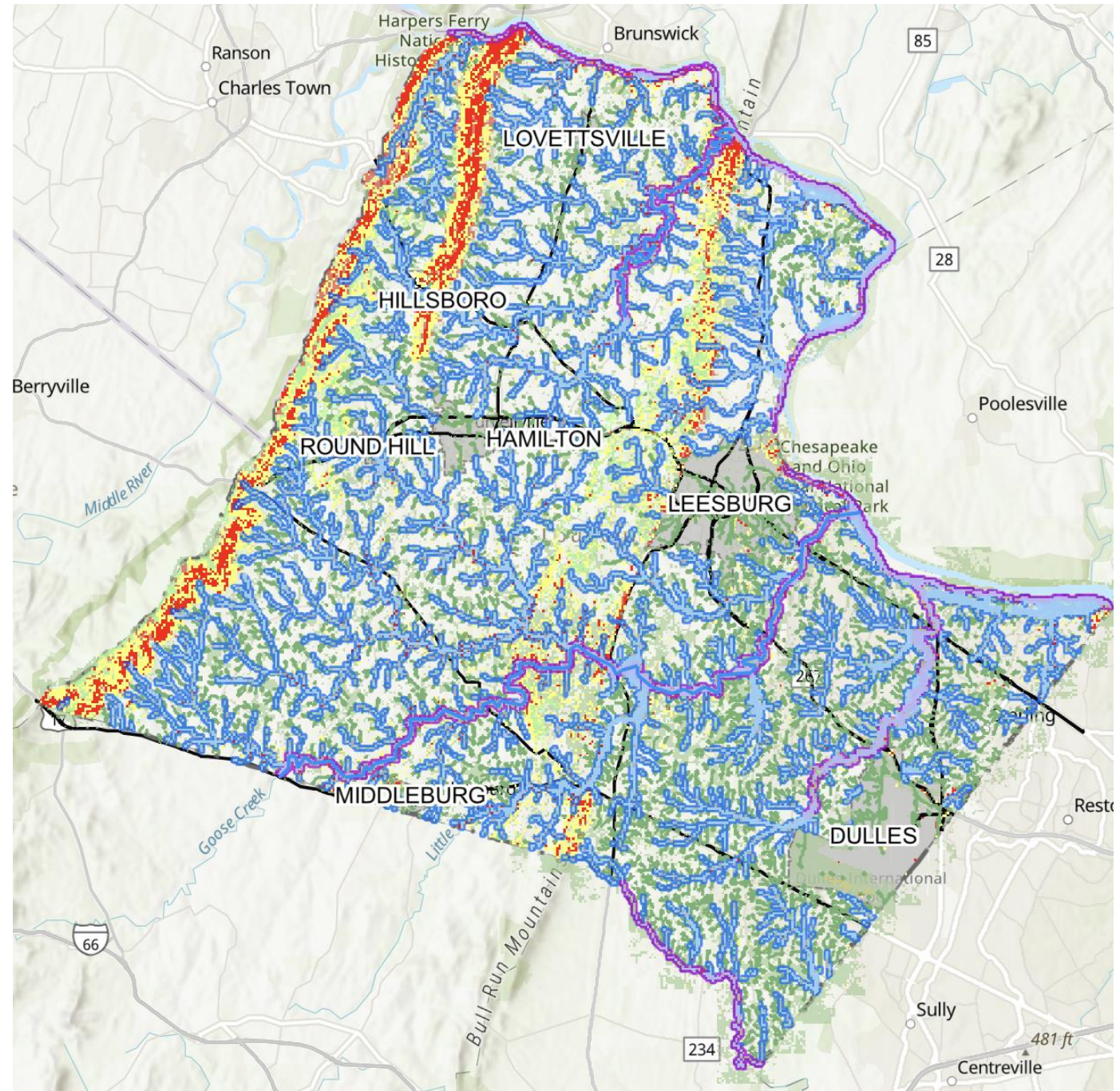
Furnace Mountain



15. Scenic Rivers +
River & Stream
Corridor + Wetlands +
Steep Slopes +
Mountain OD + Forest



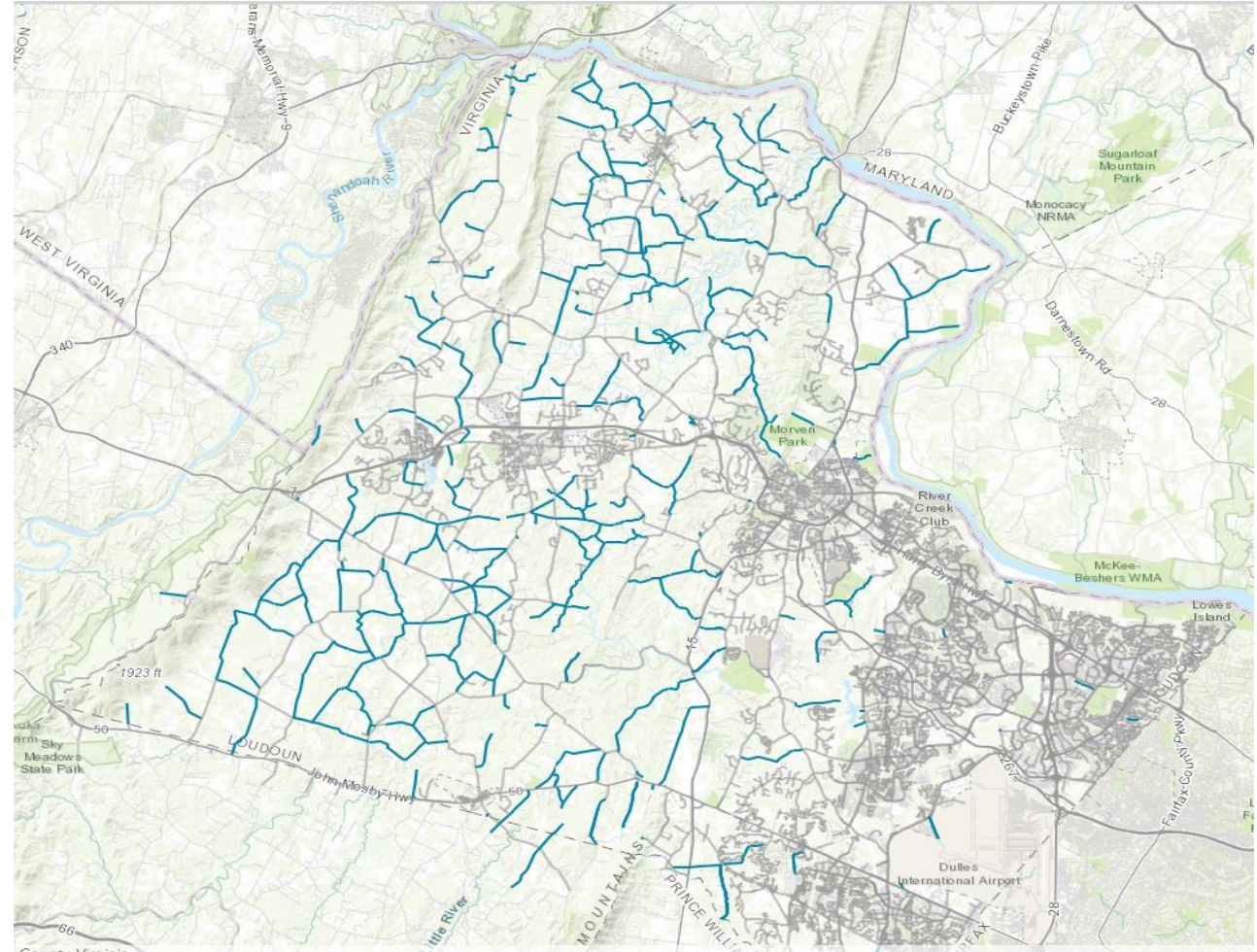
Gordon Pond, Sweet Run State Park



16. Recreation: Loudoun's Unpaved Roads

300 miles of roads going back three centuries

Preservation Loudoun: "Virginia's Most Endangered Historic Places," 2020



Jim Hanna
Chair, Data Center Working Group
Loudoun Preservation and
Conservation Coalition

LTLA Conclusions and Next Steps

Conclusions

LTLA finds that the NextEra proposal suffers from 3 critical weaknesses and will not meet the standards of the Virginia SCC. It fails to

- Avoid or reasonably minimize the negative effects on economic development in Loudoun and the Commonwealth of Virginia
- Avoid or reasonably minimize the adverse impacts on scenic assets, historic resources and the environment of Loudoun
- Give adequate consideration to the use of existing rights of way to minimize harm

Next Steps

We understand that NextEra will

- Complete within the next 2 months its routing study that defines at least two options for its proposed transmission line
- Then hold community meetings in the Fall prior to submitting its final proposals to the Virginia SCC by the end of the year

Through this process, we will continue to

- Strenuously oppose a new transmission path anywhere in Loudoun County

How Can I Help?

- Sign the LTLA Declaration
- Stay informed
- Volunteer your time
- Share information with neighbors
- Check out waterfordfoundation.org website
- Donate



Sign onto the LTLA Declaration!



Creative Solutions – Focus on Impact

